



Space Solar Power 24 Hrs per day Using 40% Efficient IR to DC Power Modules

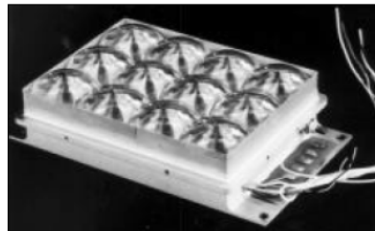
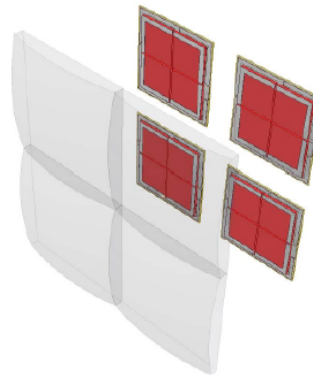
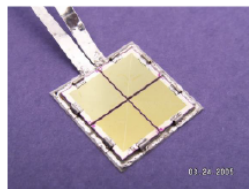


Photo courtesy of NASA

Figure 8: Photo of the CPV array using GaSb IR cells in the PASP+ Mini Dome Concentrator experiment [12].



FF	0.682
Voc	2.046
Isc	3.063
Pmax	4.273
Cell Area	0.49
Receiver Area	1.96
1 sun Isc	0.0092
Suns	331.85

Figure 9: GaSb Circuit [12] for 1.5 micron IR power Beaming. Example 16 W at 6 V.